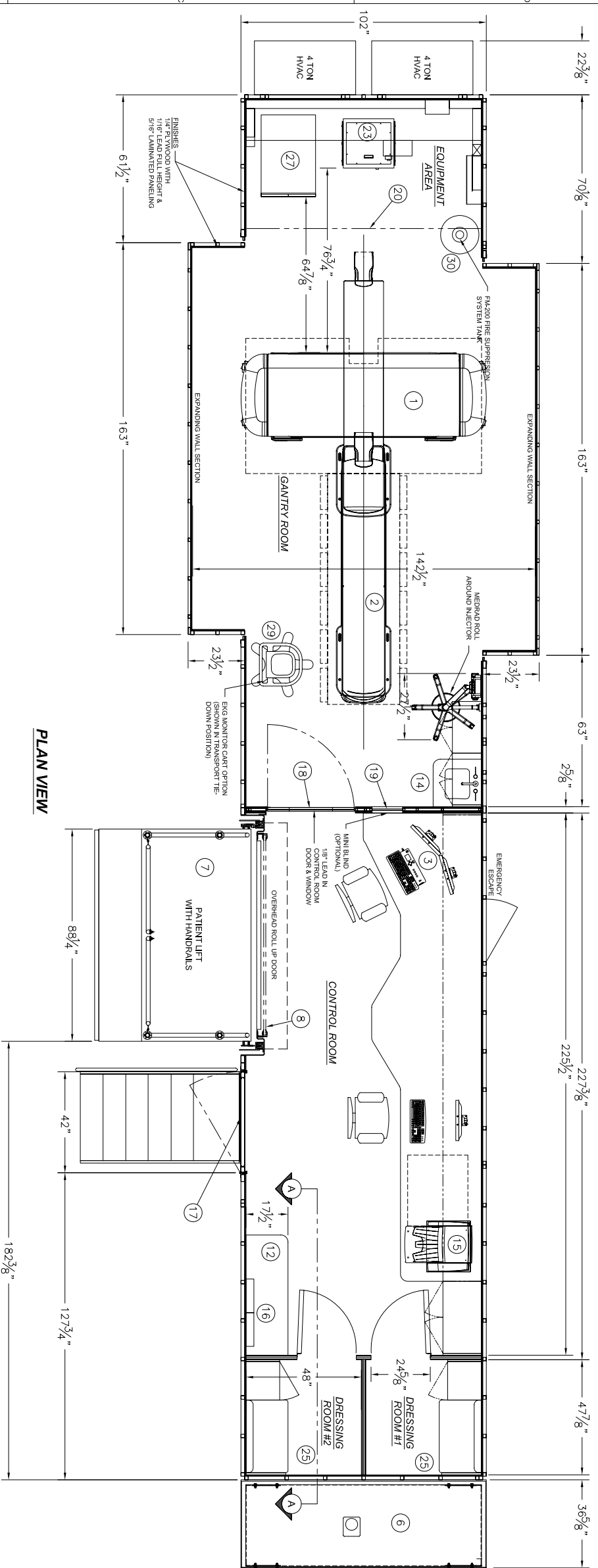
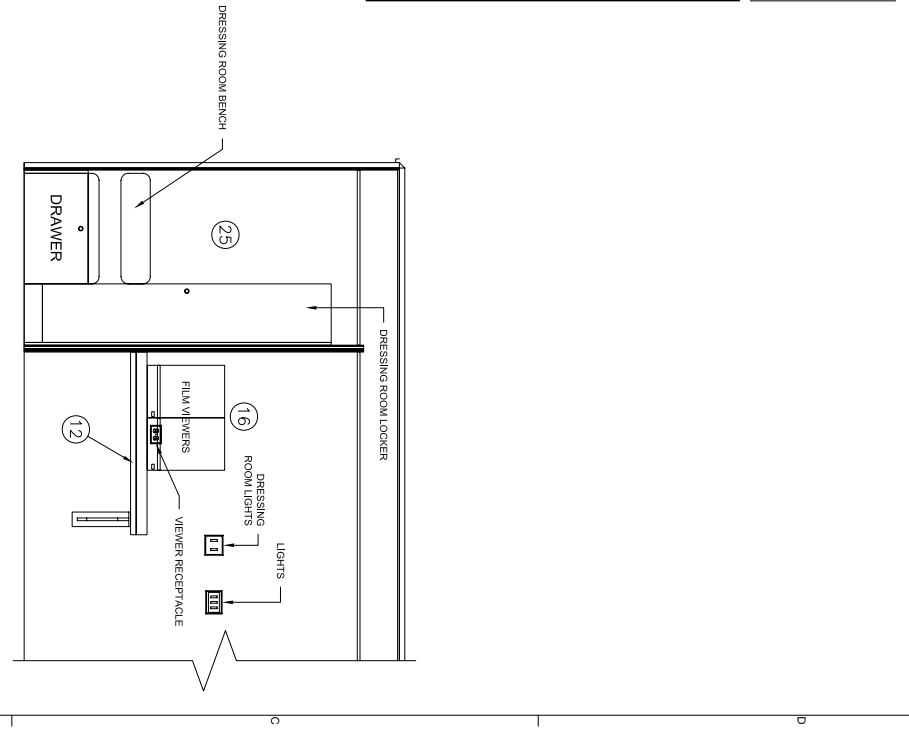


REV	REV. DATE	CHK. BY	CHK. DATE	ENG.	DESCRIPTION
08	03MAY06	WLL	02/13/06	D. BEZOLD	UPDATED FOR 1/4" FURRING

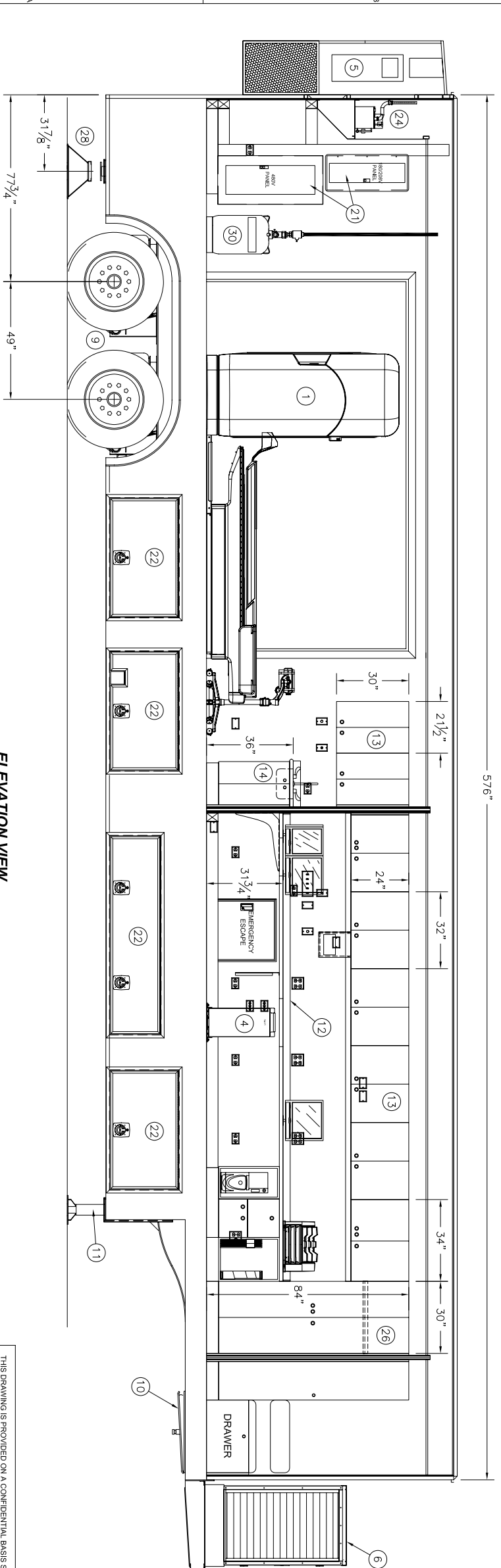
REVISIONS



PLAN VIEW



SECTION A-A



ELEVATION VIEW

ITEM QTY	PART NUMBER	DESCRIPTION
1		CHRS RECON
1		EKG MONITOR ROLL (OPTION)
1		STABILIZING STAND
1		PUMP w/ OXYGEN TANK CABINET (OPTION)
1		18" x 30" x 84" BASE CABINET
1		PATIENT CHANGING ROOMS
1		HUMIDIFIER
1		TEAL TRANSFORMER
6		LOWER COMPARTMENT DOOR (4FS/ 5-DS)
2		ELECTRICAL SERVICE PANELS (1-480V/ 1-208V)
1		CURTAIN
1		16" x 24" LEADED WINDOW
1		34" x 80" DOOR w/ 16" x 24" LEADED WINDOW
1		42" x 80" ENTRY DOOR
2		VIEWER
1		CODONICS PRINTER (OPTION)
1		SINK CABINET
8		OVERHEAD CABINETS
2		WORK COUNTER
2		HYDRAULIC LEVELING LEGS
1		AIR RIDE UPPER COUPLER (KING PIN)
1		ROLL-UP DOOR, 6'-5" x 6'-5"
1		PLATFORM LIFT
1		100KW DIESEL GENERATOR
2		48,000 BTU AIR CONDITIONER
1		HOST CABINET
1		OPERATOR CONSOLE
1		PATIENT TABLE
1		GANTRY BRILLIANCE CT

BILL OF MATERIALS

THIS DRAWING IS PROVIDED ON A CONFIDENTIAL BASIS SUBJECT TO RETURN ON DEMAND OF OSHKOSH SPECIALTY VEHICLES (OSHKOSH), WHICH RETAINS ALL RIGHTS ASSOCIATED WITH IT AND THE ARTICLE OR ARTICLES IT REPRESENTS. DISCLOSURE, REPRODUCTION OR ALTERATION OF ANY PART OF THIS DRAWING OR MANUFACTURE, USE OR SALE OF THE ARTICLE OR ARTICLES REPRESENTED IS PROHIBITED WITHOUT THE PRIOR WRITTEN AUTHORIZATION OF OSHKOSH. © OSHKOSH SPECIALTY VEHICLES (unpublished).

SHEET NUMBER: SHEET 1 OF 1
 REFERENCE DRAWING: TITLE: GENERAL LAYOUT (40 & 64 SIZE LAYOUTS)
 PULPUS BRILLIANCE CT
 8'-5" X 13'-5" X 48'-0" TRAILER

DATE: 29 JUN 05
 SCALE: 1/2" = 1'-0"

CHECKED BY: [Signature]
 DRAWING NUMBER: 10270-A01

OSHKOSH SPECIALTY VEHICLES
 16745 S. LATHROP AVENUE
 HARVEY, IL 60426
 PHONE: (708) 596-5066
 FAX: (708) 596-2480